

**WHOM TO CONTACT  
IF YOU SEE  
A SUSPICIOUS  
AQUATIC PLANT**

Biologists:

James M. Seales

[jseales@wlf.louisiana.gov](mailto:jseales@wlf.louisiana.gov)

Jeff Sibley

[jsibley@wlf.louisiana.gov](mailto:jsibley@wlf.louisiana.gov)

Louisiana

Dept. of Wildlife and Fisheries

District 1

1401 Talton St.

Minden, LA 71055

(318) 371-3050

Dr. Robert Haynes

Member Claiborne Parish

Watershed District Commission

Biologist-Aquatic Plants

Specialist

(318) 258-5954

[robert.r.haynes@gmail.com](mailto:robert.r.haynes@gmail.com)



**WORKING TO  
PROTECT AND DEVELOP  
PARISH WATER RESOURCES**

507 W. Main

P.O. Box 318

Homer, LA 71040

(318) 927-5161

<http://cpwater.org>

**HELP  
CONTROL  
WATER  
WEEDS  
ON LAKE  
CLAIBORNE**



**STOP AQUATIC  
HITCHHIKERS!**

## HAVE YOU SEEN THIS WEED?

### KNOWN TO LAKE CLAIBORNE:

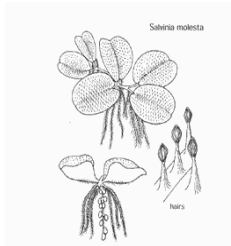


**ALLIGATOR  
WEED**



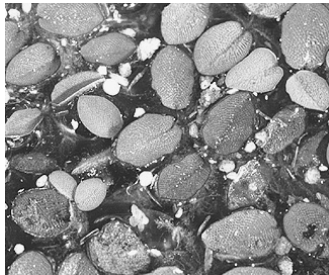
**WATER  
HYACINTH**

These weeds are more a local nuisance than a threat to the lake. Work with neighbors to clear them by hand. Call Wildlife and Fisheries before using an herbicide.



### **GIANT**

**SALVINIA**, one of the world's worst invaders, was first spotted on Lake Claiborne in 2008. Its spread can double within days. Many of LA Wildlife and Fisheries aquatic plant control resources are at this time used to control this invader, leaving limited resources for control of other weeds.



## WEEDS CAN DESTROY A LAKE FOR ITS CUSTOMARY USES

- make shorelines unattractive
- make waters unusable for water activities
- force boaters to cut trails through the weeds to access open water
- ruin boat engines clogging intakes and jamming steering
- reduce game fish numbers and size (weeds clog their habitat and weed decay impairs water quality)
- hurt businesses that depend on the lake's recreational and residential development opportunities

## YOU CAN HELP

### **BE AN EXTRA SET OF EYES!**

#### Report Giant Salvinia

To: Dept. of Wildlife and Fisheries biologists: (318) 371-3050

If possible, bring them a plant sample: 1401 Talton St., Minden LA 71055

Or To: Dr. Robert Haynes, aquatic plant specialist:, Athens, LA, (318) 258-5954  
Dr. Haynes will look at your plant sample.

**REMEMBER: Better a false alarm than risk spread of a serious invader!**

## CLEAN YOUR BOAT!

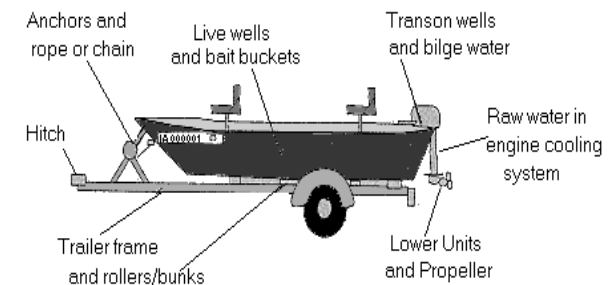
Lake weeds are hitchhikers, carried between lakes by boats and trailers.

One of the best ways to prevent spread of weeds is to clean your boat and trailer.

Every time you use your boat, follow these steps when you leave the water\*:

1. Remove plants, plant fragments, and mud from the boat and trailer;
2. Remove water from motors, jet drives, live wells, boat hulls, scuba tanks and regulators, boots, waders, bait buckets and swimming floats.

\* steps apply to all equipment used in water



### **STAY INFORMED!**

Visit websites, including [cpwater.org](http://cpwater.org)